

Myddle Earth

The quarterly Magazine of the Pagan Federation Midwest and Wales District

Beltane 2020

Issue 149

CONTENTS

2. Editor's Blurb
3. Sky at Night
4. District Manager's Report
5. The Little Quiz
6. "A Slow Awakening"
8. Witchcrafter Art on Glass
9. Moon meditation
11. "Sea Witch"
13. District Moots and Meetings
17. Submission Guidelines

Welcome to Myddle Earth

Your **Pagan Federation District Managers** are Audrey and Richard

Contact details

mwaw.dm@paganfederation.co.uk or write to us at Pagan Federation, BM Box 7097, London WC1N 3XX. You can also find us on Facebook: 'Pagan Federation Mid-west and Wales'

Myddle Earth Editor: Ailim Email: mwaw.editor@paganfederation.co.uk

Myddle Earth is distributed four times a year to local PF members (and a few others). Your contributions are welcome, whether they are letters, stories, poems, suggestions and/or black-and-white drawings. Don't be shy—share them with us. This is **your** magazine.

Copy deadlines:

- 31 December for Imbolc issue
- 31 March for Beltane issue
- 30 June for Lughnasadh issue
- 30 September for Samhain issue

Advertising: This is free for non-profit-making ventures. For commercial advertising, prices on request. Adverts can be posted as a hard copy to: Pagan Federation, BM Box 7097, London WC1N 3XX or emailed to: mwaw.editor@paganfederation.co.uk.

Editor's Blurb

The signs were there, but ignored. Uncertainty led to panic. Enforced solitude may cause more harm in the long run, than the Bug. Since our Imbolc edition, change such as few have seen in our lifetime has caused many to re-think their values and lifestyle. Who knows, perhaps this is Nature's wake-up call—live within your means; look after the Earth and She will look after you.

As I'm writing this my garden is springing to life, and in the quietness the birds are giving full throat to their songs. It looks like the hedgehogs are back snuffling across lawn and patio. Blue-bells have flourished in my little patch of wilderness at the bottom of the garden, and it's fingers crossed that this year I will enjoy home grown potatoes, green beans and, provided the cats and garden visitors don't uproot them, lettuce. I'm fortunate, but I know there are many who don't have access to their own garden and, during lock-down, are feeling the slowness of time.

So in this time of hardship and grief for many, a big thanks to our Contributors for making our Beltane issue vibrant, full of inspiration and hope. Don't forget you can send in contributions any time for the next edition of Myddle Earth—let's keep our magazine alive!

Please be Safe and Well.

Bright blessings to you all,

Ailim

SKY AT NIGHT

Would you like to take over our "Sky at Night" section.
If interested please write to the Editor at: mwaw.editor@paganfederation.co.uk

May:

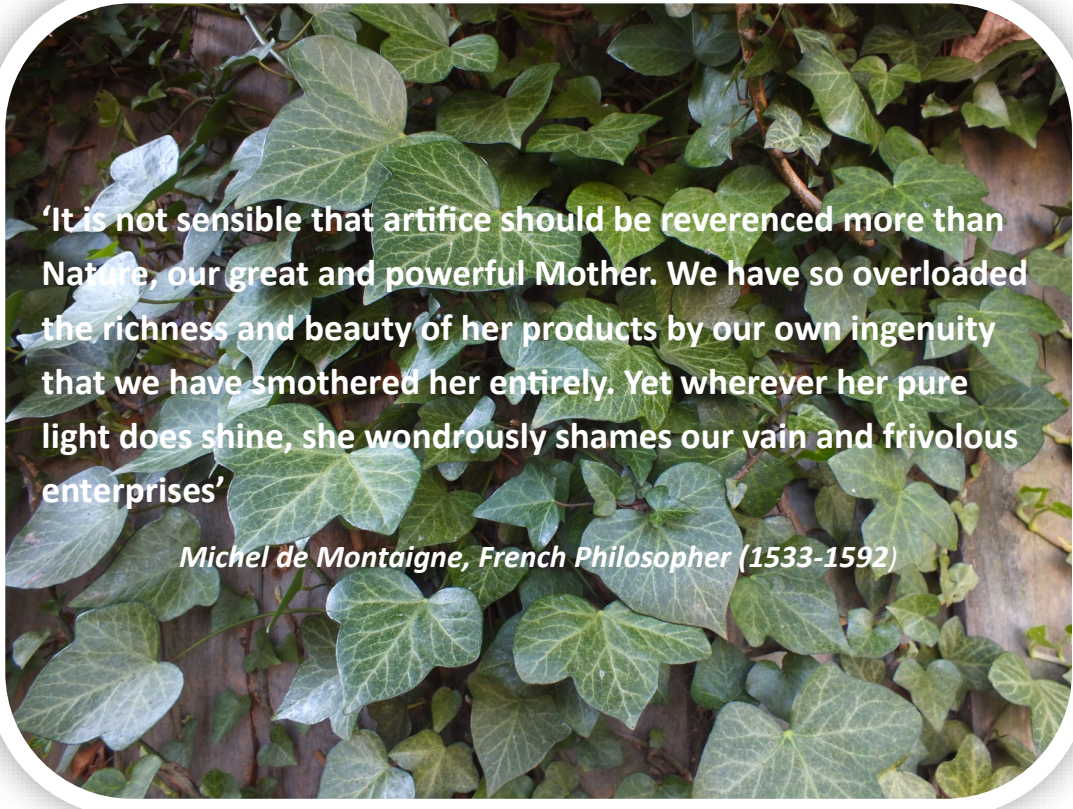
Planets Visible
Morning: Mars, Jupiter and Saturn
Evening: Venus
Thurs 7th: Full Moon 11:45
Mon 18th: Jupiter and Saturn close together.
Fri 22nd: New Moon 18:39

June:

Planets Visible
Morning: Venus and Mars
Evening: Mercury
All Night: Jupiter and Saturn
Fri 5th: Full Moon 20:12
Penumbral Lunar Eclipse 20:24.
Only last part visible on the horizon as the Moon rises in the U.K.
Sat 20th: **SUMMER SOLSTICE 22:44**
Sun 21st: New Moon 07:41

JULY:

Planets Visible
Morning: Mercury, Venus and Mars
All Night: Jupiter and Saturn
Sun 5th: Full Moon 05.44. Between Jupiter and Saturn.
Mon 20th: New Moon 18:33
7th/8th and 26th/27th: Capricornida Meteor Shower Peak.



'It is not sensible that artifice should be revered more than Nature, our great and powerful Mother. We have so overloaded the richness and beauty of her products by our own ingenuity that we have smothered her entirely. Yet wherever her pure light does shine, she wondrously shames our vain and frivolous enterprises'

Michel de Montaigne, French Philosopher (1533-1592)

DISTRICT NEWS

District Managers Report – BELTANE 2020

Strange times we are living in. At Imbolc, the world had scarcely heard of Covid-19. It was some illness that was mentioned in news reports as happening in a province of China and not something we in Britain had much interest in. Now it pervades our news broadcasts, conversations, everyday lives to the point where little else gets a look in. At the time of writing, the country has been in lockdown for a week and all except 'key workers' are required by law to stay at home. Our lives have been turned upside-down, the familiar patterns lost for an indefinite time while the country tries to fight this disease.

For Pagans, Nature is focal. Those of us lucky enough to have gardens can enjoy the Spring flowers and green plants now very much in evidence, and we yearn to get out to enjoy this seasonal delight further than our own immediate surroundings. Perhaps a day visiting an ancient Pagan site, open rituals with others of our kind, or just a walk along a country lane or coast path. These are now out-of-bounds unless very close to home, and even then for limited daily 'healthy exercise'. Anyone in the confined space of a block of flats in an inner city must feel this cut-off from Nature acutely, though it helps if you can open a window or just look out at the world.

Social media, that good/bad (depending on your outlook) facility has allowed us to keep in contact with each other at a safe 'social distance' and some enterprising folks in the Pagan Federation have used this resource to the full in providing a series of online activities to enable us to share our Paganism and reduce the pain of isolation.

Virtual Moots, seasonal celebrations, etc, are available via the Pagan Federation Community Facebook page <https://www.facebook.com/groups/paganfed>

Our frailty, inter-connectedness, community spirit, humour, resourcefulness and more are being tested in these extraordinary times. Atmospheric pollution has diminished with reduction in motorised traffic and air travel world-wide, but litter in the form of discarded filter masks and vinyl gloves has increased. What might emerge at the end of this crisis? Let's set an example by doing what we can to help create a more caring, less wasteful society. The future of life on Earth depends on it.

Wishing everyone well and a Happy Beltane!

Audrey & Richard

(District Managers, Pagan Federation Mid-west and Wales) mwaw.dm@paganfederation.co.uk

VOLUNTEERS NEEDED:

Bristol – Regional Coordinator

Staffs & Shropshire – Regional Coordinator

Three Counties – Regional Coordinator

Website Manager – to maintain our lovely District website

Events Organiser -- Conferences, camps, etc.

If you think you might want to help with any of these roles, please contact us at mwaw.dm@paganfederation.co.uk and we'll have a chat about what the job involves.

No obligation!

DISTRICT PF OFFICERS

RC for South and Mid-Wales: Catherine A - mwaw.southwales@paganfederation.co.uk

RC for North Wales: Jackie - mwaw.northwales@paganfederation.co.uk

LGBTQ+ Officer (for Pagans of alternative sexualities):

Catherine W - mwaw.lgbt@paganfederation.co.uk

RC for Bristol: Vacant

RC for Staffordshire/Shropshire: Vacant

RC for Three Counties: Vacant

Website Manager: Vacant

REGIONAL REPORTS

THREE COUNTIES REGION (Herefordshire, Gloucestershire and Worcestershire)

Find us here: https://www.facebook.com/Pagan-Federation-Three-Counties-2127069290717190/?modal=admin_todo_tour

MID-WEST REGION (Staffordshire and Shropshire)

Please see the Moots listing towards the end of the Myddle Earth magazine for get-togethers in Kidsgrove, Stafford and Stoke-on-Trent. We don't have a Regional Co-ordinator for this Region so if anyone wants to get active and volunteer for the PF we would love to hear from you, please contact us at mwaw.dm@paganfederation.co.uk

BRISTOL

The city hosts the well-established 'Bristol Open Circle Moot' that has been going for over ten years now. It is independent of the Pagan Federation, and there are others in the area. Find out more via their page: <https://www.facebook.com/groups/BrOCM/>

You might also like to know about the Bristol Goddess Temple which is open to visitors, find out more at https://www.facebook.com/BristolGoddessTemple/?ref=br_rs

Note: If you don't use Facebook, please contact us at mwaw.dm@paganfederation.co.uk and we'll find out the information for you.



★ **The Little QUIZ** contributed this month by Ailim



1. Who was the ancient Irish god and leader of the Tuatha de Danaan?.
2. What is the name of the mundane knife Witches/Wiccan's use to cut herbs, candles and cords?
3. Who is the twin sister of the god, Apollo?
4. What is the goddess Anthea (the sender of night visions) better known as?.
5. Which Irish goddess sometimes takes the form of a crow or raven?



Answers on page 17



A Slow Awakening

By Jon and Jan Barnes

The path to becoming Pagan is as varied as the individuals who walk it and the journey itself can be greatly winding! This much has become very clear to my wife and I as we came to embrace Paganism over the last few years. We are new to this journey, a journey that will last for the rest of this life, a life that has been a great trial at times! So these are my personal musings on the journey so far.....

I have always held an affinity and love for the outdoors and especially woodlands and heathland. I was



lucky enough in my early life to live adjacent to a large woodland and spent a great deal of time in there, having the sort of adventures that many kids today simply don't understand and getting (horror of horrors!) dirty, cut and grazed.

Due to where we lived and the isolation that our family matters tended to impose, I had few friends and so spent long periods in my own company in the woods, where I subconsciously learnt to be still and listen to the natural world around me at an early age. Not that I thought this consciously, I was way too young to think in those terms!

My teen years passed as teen years do in the usual whirl of school, sport, music, girls (strange creatures!), exams etc. etc. but through it all I continued to find peace in the great outdoors and the quiet stillness of daydreaming. But not too much daydreaming..... At the age of 18 I joined the Armed Forces via the Territorial Army where I got to do many adventurous things and a few downright dangerous activities and at 20 I joined the RAF as aircrew. I travelled the world, got as far south as The Falklands (involved in a certain war there) and saw some stunning places and met some amazing people.

Now I can see that through all the above times, my spirit, soul or whatever you want to call it was looking for a home as I found peace in the wild places wherever in the world I was. The Falklands were an exception for obvious reasons; a great deal of damage was done there to me due to things I saw and things I did there. My tortured mind put those memories away for over 30 years, recently they came back, for which I am now getting regular therapy for PTSD. I hope to go back there sometime and lay a few demons to rest there.

The resurrection of these memories a couple of years ago also jumpstarted my embracing of Paganism. For a number of years my wife, son and I have regularly stayed at a caravan site near Glastonbury (indeed by the time you all read this we will have visited there at least once), and the Vale of Avalon has come to mean a great deal to us and has enriched us spiritually. We didn't know what it was about the place for years, but Avalon worked its magic on us and steered us towards the Pagan path. And we haven't looked back. We formally embraced the path some 3 – 4 years ago, joined the Pagan Federation, and live the life. The mundane things are always the most striking; putting "Pagan" down as your "religion" on forms and applications still feels slightly surreal to someone who has always put "Church of England".

Recently we had a group of Christian folk knock on our front door and begin the time honoured spiel on Christianity. I politely stopped them and informed them that this was a Pagan household. The shock was genuine but the lady rallied well and said "I don't think I have ever come across one of those before!" and we got into a light hearted conversation about Paganism and what we did.



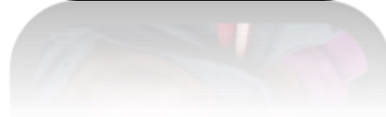
I think they were disappointed that there was no naked dancing in the woods, but the lady was fascinated by my wife's Goddess shrine in the dining room. Unfortunately one of her companions was not too impressed and "Devil Worshippers" was two of the few repeatable words in her short tirade.

Overall, we have had nothing but acceptance from friends and family about our choice, but there have been a few raised eyebrows and the occasional uninformed comment as can be seen above – prejudice is a wonderful thing isn't it! (Sarcasm – honest!!)

So we look forward to the future. Jan and I hope to meet up with all or some of you in the near future at some sort of moot or gathering near Swansea, wherever that may be, and learning more and more about this path and journey we have chosen to take.

In the meantime;

Goddess Blessings to you all
Jon and Jan Barnes



Have Your Say!

We'd love to hear from you! Don't be shy. Share tips and suggestions; does *Myddle Earth* float your boat? Let us know how we can improve it.

If you have something to say, please drop an email to the Editor at mwaw.editor@paganfederation.co.uk

Witch Crafter Artist Creates Familiar Portraits on Wine Glasses

Claire Valentine-Gibson is the artist with the magical paintbrush, and has found a way to make wonderful gifts featuring our familiars.

"I have painted a number of pet portraits in the past as commissions. I even painted one for a customer in Michigan! I usually use oil or watercolour on canvas or paper, but recently, something happened, and it gave me an idea."

Claire goes on to explain how a friend's daughter had bought her a gin glass that had her name on for her birthday. But, the words all started to come off even before it had been used once. The manufacturer had clearly used the wrong materials for the job and has used card makers letters. The lovely girl was so upset that the present was ruined and was going to send it back to the shop, when Claire intervened with her magical paintbrush.



She collected the glass and cleaned off all the marks and then proceeded to paint a portrait of her friend's pet dog onto the glass. Along with the words "Paws for Gin", a comical portrait of the dog was painted onto the glass using Pebeo Vitrail

Glass Paints. She wrapped it up and gave it to her friend who said, *"it made me smile and my heart was bursting"*.

Claire then went on to paint another familiar, again, a dog, for a lady who was caring for her sick nan right at the Corona Virus lockdown started. Nan was in a hospice and it was dark times indeed. Claire thought it would be a lovely idea to cheer her up by painting her familiar onto a wine glass.



"I buy my glasses from the charity shops in Stone and so I am helping the charity as well as recycling items. I use lots of recycled and up cycled materials in my art because I love nature and I am trying to do as much as I can to reduce my impact on the environment. I had managed to go to a couple of charity shops just before the lockdown for Covid 19 started so I had some in stock."

If you have a person who you would like to bring a smile to their face and think that they would like to see their familiar on a glass, get in touch with Claire Valentine-Gibson. You can also have a look at her website to see the type of work that she does.

Email witchcrafterart@gmail.com

Facebook [@witchcrafterart](https://www.facebook.com/witchcrafterart)

Twitter [@CrafterWitch](https://twitter.com/CrafterWitch)

Instagram [the_witchcrafter_artist](https://www.instagram.com/the_witchcrafter_artist)

Website <https://www.witchcrafterart.co.uk>



PAGAN TRANSITIONS: I would like to say Thank You to Celebrants of all faiths, who are doing their best to provide meaningful funeral ceremonies during the Covid-19 shutdown.

Pagan Transitions is a Pagan funeral resource site to enable you to create beautiful funeral rites to reflect the spirituality of the person who has passed through the Gateway. If you are a Funeral Celebrant and would like to have a free listing please complete the application form available from the website at www.pagan-transitions.org.uk

Pet owners who want to do their own personal ceremony, there is also a template available to download and alter to suit your needs.

Moon meditation.

by Amber

See in front of you a large oval basket. Get in and settle down among the warm blankets and pillows. Look up and you will see lots of helium balloons attached to the basket, more and more appear until you hear a creaking from the basket and realise that you are floating. You can look down if you want to and see the ground getting smaller as you float above the trees. Enjoy this feeling of floating. You will now notice that a clear bubble has formed around the entire basket, sealing it and keeping you warm, and safe, enabling you to breathe in the atmosphere as you soar higher and higher.

Notice the sky changing colour to a deep azure blue, then you see the stars appear around you. If you want to look down you will see the earth as a small blue planet as you soar ever upwards to the moon. Look up again and see the moon before you, glistening and sparkling, inviting. You get closer and closer until, with a gentle bump, you have landed on the moon.

Sit up and look around you. It is safe to get out of the balloon as the bubble will stay around your head, enabling you to breathe. Stand for a while and take in the view, look at the earth, far, far away. See the star constellations from a different angle and when you are ready, look around, you will notice there is a door within a hill, not too far away. Walk, or float, over to the hill, take the handle and open the door.

Inside is a large room with crystals embedded in the walls, gleaming, shining, all different colours. The floor is like marble. Walk around the room. Soon you will find that one crystal is standing out proud from all the others, this one is for you. Stand in front of it and it will start to glow with energy, put your hand out, and if it is meant for you it will fall softly into your hand. If it does not then look around for the one that does, do not worry if there is not one at this time, you can come back again.

When you have the crystal hold it for a while and feel the energy it is giving you. There is a soft chair behind you so sit down if you want to, close your eyes and see what the crystal is meant to do. It is yours forever. It may change colour, or intensity at times, but you can access it whenever you wish to, and use it to gain answers and knowledge. I am going to leave you with your thoughts for a couple of minutes.

Now it is time to leave, so get up and give thanks to the room for this wonderful experience. Leave through the door and close it softly. Walk towards the basket and climb back in, settling amongst the blankets and cushions. See the bubble surround the basket again, and feel the balloons lifting you from the moon's surface. As you float back to earth see the moon above you growing smaller and smaller, drifting down through the stars, slowly coming back to earth. See the earth getting bigger and bigger as you drift down to the place you came from.



Feel a gentle bump as you land back on the earth, the bubble disappears and one by one the helium balloons vanish. Sit up and get out of the basket, look around you and know where you are. Look in your hand and you will see the crystal, glowing softly. It is yours, keep it safe.

Now start coming back to this room, feeling relaxed and warm, start coming back, and open your eyes when you are ready.



PET'S CORNER

Share your anecdotes about favourite pets, or classic sayings perhaps.



Dogs really are perfect soldiers. They are brave and smart; they can smell through walls, see in the dark, and eat Army rations without complaint.

<https://www.wiseoldsayings.com/pets-quotes/#ixzz6Jx3k6e2y>

YOUR CONTRIBUTIONS NEEDED: articles, stories, poems, pictures etc.

Submissions: Deadline for Lughnasadh issue: 30th June 2020

Please send your contributions to The Editor at mwaw.editor@paganfederation.co.uk

Mae croeso i gyfraniadau yn Gymraeg. Contributions in Welsh are welcome! (Please send an English translation with your submissions).

This is Your magazine, please help us make it special for everyone!

Don't wait for the Deadline! Why not send in your contribution now for our next issue.

Submissions may be edited due to available space and content.



Salt, Vinegar and Baking Soda!

"Wit is the salt of conversation, not the food." - William Hazlitt

Candles: Stop new candles from dripping. Soak in a strong solution of 1/2 cup of water and 1/2 cup salt for several hours. Let the candles dry, then burn as usual.

Antibacterial hand spray for gardeners: Carry a spray bottle with white distilled vinegar with you and if you scratch yourself, spray it with the solution straight away which should prevent infection.

Jewellery: Clean gold and silver jewellery with 3 parts baking soda to 1 part water. Rub on gently, then rinse. Buff with a soft cloth.



Pagan Aid has been raising money to support charitable causes around the world that are focused on the environment, sustainability and reducing poverty. We have raised money for indigenous tribes in Canada and Australia, supported the work of Patrick McCullom and funded tree planting in Africa.

Alongside donations and members we need new trustees and a new chair. There is work involved in running the charity and we have no paid members of staff so the work is all done by trustees and volunteers. If you are willing to get involved then please contact us at chair@paganaid.org

For more information on the work we do please visit <https://www.paganaid.org/>

The Sea Witch

By Vicky

There is no moon, and there are no clouds. The depth of night is pierced with stars, constellations telling forgotten stories, with the milky way flowing from horizon to zenith. She stands beneath this arcing sky, woollen cloak hugged around her body, oak leaves embroidered along the hem in a way that suggests they've been carried down river then tossed amongst foam-flecked waves. Silver threads hint at shoals of fish, but only hint, like the flash beneath the water out of the corner of your eye. A hood creates even deeper shadows than the night provides – there is only the barest glint of eyeshine, the briefest flash of white teeth as her lips part in muttered utterance. But no one can hear the words even if stood next to her.

The night carries the soft sigh of waves on sand. The ocean is breathing in the darkness and she stands before it, a supplicant.

Her fingers lessen their grip on her cloak so the folds hang loose about her frame. Hands reach up to push back her hood and it falls away from her face. If there were a moon there would be enough light to see that her heavy copper-coloured hair, so tightly braided down her back, is streaked with grey, and crows' feet are etched at the corners of her eyes. She is not old, but the night does not distinguish her from someone at any other point on their life's journey.

At her waist is tied a leather pouch. She glances down as she unties the straps that bind it and withdraws a candle stump, a flint and steel, and a small stoppered vial.

Crouching down in the sand she presses the candle stump into the soft surface. Then taking flint and steel she strikes them together, sparks jumping until a flame is birthed by the candle wick. It wavers briefly before taking form, now the only earthly light.

She returns the flint and steel to the pouch at her waist then rises again, grasping a staff that until now has lain at her feet, placed there when she'd first arrived. Standing upright the vial is in her right hand and the staff is in her left – she raises it high above her head.

The stars wait

The ocean breathes.

"Spirits of this place! I call witness!" the sudden words splits the silence. Her voice echoes through the darkness, clear and confident. She is answered by a heavy splash somewhere out on the water's surface and a guttural cackle of a sleepy fulmar from the cliffs behind.

"By the three realms I am here and through their elements I am connected. By the earth beneath my feet, that which is my bone and my flesh, I call upon you! Bear witness!" with that she lowers her staff and, with it's tip, draws a spiral in the sand, starting by the candle, curving out towards the waves, spiralling anticlockwise. She raises the staff again, the sand shifts beneath her feet.

The stars wait.

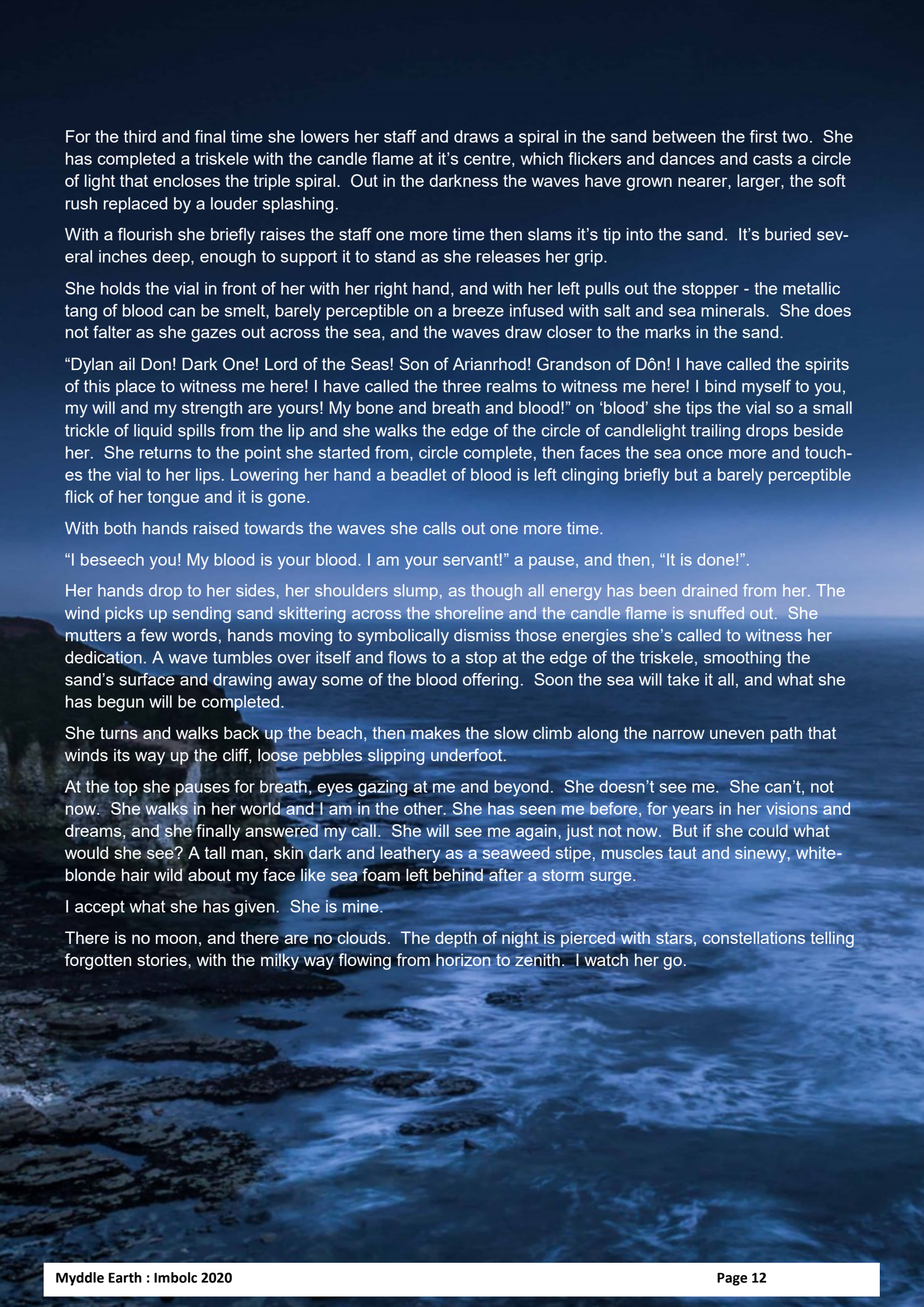
The ocean breathes.

"By the sky above me, that which is the breath in my lungs, my thoughts and memories, I call upon you! Bear witness!" Again she lowers her staff, again she uses it to draw a spiral, starting 120 degrees from the first point, spiralling anticlockwise. She raises the staff again, the breeze tugs at the loose hairs not caught in her braid, the candle gutters before recovering.

The stars wait.

The ocean breathes.

"By the sea that surrounds me, that which sustains me, my life's blood, the waters of my womb where life may grow, I call upon you! Bear witness!"



For the third and final time she lowers her staff and draws a spiral in the sand between the first two. She has completed a triskele with the candle flame at it's centre, which flickers and dances and casts a circle of light that encloses the triple spiral. Out in the darkness the waves have grown nearer, larger, the soft rush replaced by a louder splashing.

With a flourish she briefly raises the staff one more time then slams it's tip into the sand. It's buried several inches deep, enough to support it to stand as she releases her grip.

She holds the vial in front of her with her right hand, and with her left pulls out the stopper - the metallic tang of blood can be smelt, barely perceptible on a breeze infused with salt and sea minerals. She does not falter as she gazes out across the sea, and the waves draw closer to the marks in the sand.

"Dylan ail Don! Dark One! Lord of the Seas! Son of Arianrhod! Grandson of Dôn! I have called the spirits of this place to witness me here! I have called the three realms to witness me here! I bind myself to you, my will and my strength are yours! My bone and breath and blood!" on 'blood' she tips the vial so a small trickle of liquid spills from the lip and she walks the edge of the circle of candlelight trailing drops beside her. She returns to the point she started from, circle complete, then faces the sea once more and touches the vial to her lips. Lowering her hand a beadlet of blood is left clinging briefly but a barely perceptible flick of her tongue and it is gone.

With both hands raised towards the waves she calls out one more time.

"I beseech you! My blood is your blood. I am your servant!" a pause, and then, "It is done!"

Her hands drop to her sides, her shoulders slump, as though all energy has been drained from her. The wind picks up sending sand skittering across the shoreline and the candle flame is snuffed out. She mutters a few words, hands moving to symbolically dismiss those energies she's called to witness her dedication. A wave tumbles over itself and flows to a stop at the edge of the triskele, smoothing the sand's surface and drawing away some of the blood offering. Soon the sea will take it all, and what she has begun will be completed.

She turns and walks back up the beach, then makes the slow climb along the narrow uneven path that winds its way up the cliff, loose pebbles slipping underfoot.

At the top she pauses for breath, eyes gazing at me and beyond. She doesn't see me. She can't, not now. She walks in her world and I am in the other. She has seen me before, for years in her visions and dreams, and she finally answered my call. She will see me again, just not now. But if she could what would she see? A tall man, skin dark and leathery as a seaweed stipe, muscles taut and sinewy, white-blond hair wild about my face like sea foam left behind after a storm surge.

I accept what she has given. She is mine.

There is no moon, and there are no clouds. The depth of night is pierced with stars, constellations telling forgotten stories, with the milky way flowing from horizon to zenith. I watch her go.

MOOT LISTINGS

Please note these moots are not run by the Pagan Federation, although some may (by chance) be run by PF Officers. The Pagan Federation has not been responsible for organising moots for a very long time. However, the Pagan Federation does hold events, conferences and various other things. If you need further clarification please contact our District Manager.

Useful information and links to local events can also be found on the Pagan Federation South and Mid Wales Facebook Page - <https://www.facebook.com/pg/PFSouthWales>. It would also be helpful if contact telephone numbers could be given for those who don't use Facebook.

NB: Details are supplied by the Moot organisers and we are dependent on them advising us of any changes.

GLOUCESTERSHIRE

Frampton on Severn

3rd Tuesday of each month at the Three Horseshoes, The Green, Frampton on Severn, GL2 7DY, meeting from 8:15 onwards. More info from Jan at janethardy95@gmail.com or phone 07779 246841.

South Gloucestershire

2nd Wednesday of the month, the Huntsman at Falfield, right on the A38. 8pm for an 8.30pm start. More info from Jules & Bob <https://www.facebook.com/groups/southglospaganmoot/>

Stroud:

2nd Thursday of the month, Kings Street, upstairs in Curios lounge. 1.30 till 3 pm. Its very informal. and an opportunity for people who don't like going out at night. Bring poems, stories—all are welcome. Come and have a chat and a cup of tea. Facilitated by Janet Hardy.

Cheltenham:

New moot starting September 2019. 1st Monday of the month, 8pm onwards at the Sandford Park Ale House.

Forest of Dean:

1st Thursday of the month, the White Hart Inn, Cinderford, 7:30pm onwards. More info on the Forest of Deans Pagans FB page - <https://www.facebook.com/groups/290741101652877/>

Open Seasonal Rituals:

Crickley Hill Country Park: Gloucestershire Pagans Open Circles, Crickley Hill - www.nationaltrust.org.uk/crickley-hill/

These take place for each festival, and are on a Sunday afternoon at 3pm. Meet at the Visitors' Centre for 2:45pm, to move to nearby woodland site at 3pm. Each Circle is a simple honouring and acknowledgement of the Festival, as reflected in the Land and forest around us and explores the theme of the season. No experience necessary and no fee (you will need to pay for car-parking). Children are welcome, as are dogs on leads.

Remaining 2019 dates: Hallows - Sunday 3rd November and Yule - Sunday 22nd December

MID-WEST STAFFORDSHIRE/SHROPSHIRE

Kidsgrove Moot

Last Tuesday of each month, except in December.

The Bluebell

This is a closed group. Please send a request to join via Facebook.

New Stafford Moot

3rd Tuesday of each month

The Shrewsbury Arms, Eastgate Street.

Occasional speakers.

This is a closed group but if anyone local to Stafford wishes to join please send a request to join via Facebook.

Stoke-on-Trent Moot

2nd Wednesday of the month.

The White Star in Stoke on Trent

Run by Elric Sullivan with regular well known speakers. Elric is also the organiser of the successful Midland COA events.

WALES

Abergavenny Moot

Second Tuesday of every month

Hen and Chickens pub, Flannel street, Abergavenny, NP7 5EG

Start: 7pm

Contact ask on the South Wales Pagans FB group -<https://www.facebook.com/groups/25298269292/>

Aberystwyth Pagans

Have seasonal/monthly moots. Check out their group for more information - <https://www.facebook.com/groups/aberystwythpagangroup/>

Bridgend Moot

Please ask Siany for further details in the group page - https://www.facebook.com/groups/257960161278244/?ref=br_rs

Caldicot Pagan Moot

A new moot for the Caldicot area. Please join the group for details of the next moot.

Start: 7.00 p.m. for a 7.30 p.m.

<https://www.facebook.com/groups/422381884945564/>

Carmarthen Pagans

Last Thursday of the month

The Parrot, 32 King St, Carmarthen, SA31 1BS

Start: 7:30pm onwards

Contact the Carmarthen Pagans group -<https://www.facebook.com/groups/CarmarthenPagans/>
Carmarthen Pagans also have a mini-moot. Please ask on their group page.

Cardiff Pagan Moot

Monthly talks, workshops and discussions, including guest speakers. £1 donation to pay for room hire. They also host seasonal rituals in and around the Cardiff area.

Downstairs in the back room of *The Owain Glyndwr*, 10 St John St, Cardiff CF10 1GL

Start: 7pm for 7:30pm.

Contact C. Abbott (07989 261 773) or visit <https://www.facebook.com/groups/167919513251601/>

Cilgerran, Pembrokeshire Pagan Moot

Last Friday of the month

Venue changes, please ask in the group for details of the next moot venue

All welcome! Ask out on West Wales Pagans group - <https://www.facebook.com/groups/westwalespagans/permalink/1617896464923421/>

Cwmbran Pagan Moot

Usually the third Sunday of the month, but please check

Pontrhydyrun Community Center, NP44 1SB

Start: 7:30pm

Contact <https://www.facebook.com/groups/541651255974373>

Lampeter Pagan Society

For all those lively people who are or were members of the Pagan Society at SDUC/UWL/TSD; of all paths and interested parties in the area.

First Sunday of the month

Cwmanne Tavern

Start: 7.00 - 7.30pm

Contact the Lampeter Pagan Society group -<https://www.facebook.com/groups/24065160648/>

Maesteg Moot

Has monthly/seasonal moots and rituals.

Please visit their FB page for more information -<https://www.facebook.com/groups/1723661897866164/>

Mold, Flintshire: "The Pagan Tree Moot"

2nd Friday of the month

£2 entry which includes a drink.

There's a different topic each month with speakers. It's in a hall which has full disabled access and some parking

Contact us on Facebook as "The pagan tree moot"

Or email pagantreemoot@gmail.com

Or ring 07890646870

Newport coffee morning

First Saturday of every month

The Pen and Wig, 22-24 Stow Hill, Newport NP20 1JD

Start: 11am - 2pm (ish)

Contact: Catherine Abbott or Kalli Bowden-Porter or ask on the South Wales Pagans group -<https://www.facebook.com/groups/25298269292/>

Newtown

3rd Thursday of the month

The Monty Club, 11 Broad St, Newtown SY16 2LU

Start: 7:30pm

Facebook 'Simmering Cauldron' Contact Simmering Cauldron 01686 668404

Oswestry Moot

1st Wednesday in the month

Moved from the pub where we used to hold our meetings. Therefore, please contact Merion for directions to the new meeting place.

Start: 7.30 p.m.

Facebook page:- Oswestry Pagan Moot

Pontypridd Pagan Moot

3rd Saturday of the month (but please check first!)

Pontypridd Museum, Bridge St, Pontypridd CF37 4PE

Start: 12pm

Talks, workshops and discussions

Contact the Pontypridd Pagan Moot group -<https://www.facebook.com/groups/1590076611232881/>

Port-Talbot Pagan Pathways Gatherings (PPP Gatherings)

Last Friday of the month

Burgess Green pub, Port Talbot

Start: 7pm

Contact the PPP Gatherings - (Port-Talbot Pagan Pathways) group for further details - <https://www.facebook.com/groups/409240675924726/>

South Wales Drum Circle

Shamanic and drumming events based in and around Cwmbran.

Please contact their FB page for details of their next event - <https://www.facebook.com/groups/southwalesdrumcircles/>

Swansea Pagan Moot

Talks, workshops and more.

Third Tuesday of the month

Start: 7.30pm

Contact the Swansea Pagan Moot page -<https://www.facebook.com/groups/108929852508325/>

Teifi Pagan Moot

Last Thursday of the month (unless it clashes with something else)

The Black Lion Hotel, High Street, SA43 1HJ

Start: 7pm - 9pm

Contact Tamra at owla@ravensrede.org.uk or visit the group page -<https://www.facebook.com/groups/westwalespagans/>

Valleys

1st Wednesday of the month

The Griffin Inn, Gilfach Goch, Porth CF39 8YL

Start: 7:30pm

Contact Richard krishak2099@hotmail.com

Wales Wandering Moot (Asatru)

Irregular moots in various locations and events for all heathens.

Please contact the Asatru Wales FB group for details of the next event- <https://www.facebook.com/groups/asatruwales/>

Wrexham Pagan Moot

3rd Wednesday in the month

Wrexham Lager Club

see 'Wrexham Pagan Moot' Facebook page

If you would like your Moot or Event listed, or make any changes, please email details to:

The Editor, mwaw.editor@paganfederation.co.uk

SUBMISSION GUIDELINES

Myddle Earth is the newsletter of the Pagan Federation, Mid-West & Wales District and is published four times a year at Imbolc, Beltane, Lughnasadh/Lammas and Samhain.

We would like to encourage our readers to submit articles, artwork, poetry and other creative works for inclusion in future newsletters. Please see the guidelines below when preparing your material. If you have any queries, please email: **mwaw.editor@paganfederation.co.uk**.

- ◇ Your submission must have a Pagan theme or be of interest to the Mid-West & Wales Pagan community.
- ◇ Articles need to be submitted as a Microsoft Word or OpenOffice document. Please use Arial or another standard font; 12pt; single-spacing; left justified; without indentation.
- ◇ Please ensure that articles are between 800 and 1200 words in length, unless agreed otherwise.
- ◇ Use a friendly, casual tone. We want to make the information as accessible as possible.
- ◇ We reserve the right to abridge articles and to edit them for clarity, style, grammar and accuracy.
- ◇ Authors are responsible for the accuracy of references and reference citations.
- ◇ Images should be sent as separate files, not embedded into the document. Please indicate recommended insertion points of the images within the body of the text, and ensure that the file names enable them to be easily identified.
- ◇ Images need to be of a high quality (minimum resolution 300dpi), preferably in JPEG format. Also, please ensure that you have copyright permission for their further publication.
- ◇ All articles/artwork remain the copyright of the author/artist.
- ◇ Please send your contributions via email to **mwaw.editor@paganfederation.co.uk**. Please include the type of submission and the suggested issue for publication in the 'Subject' line. For example: 'Poem for Imbolc'.
- ◇ Welsh language submissions: please accompany with the English translation.
- ◇ Although every effort will be made to accept your contributions for publication, we reserve the right to refuse submissions.
- ◇ We're sorry but we are unable to pay for submissions.
- ◇ **GDPR STATEMENT:** If you would like to get a copy of our GDPR Statement please email **mwaw.editor@paganfederation.co.uk**.

Disclaimer: The opinions expressed by writers are not necessarily those of the Pagan Federation or its Officers.

Fun Quiz Answers

1. The Daghdha; 2. Bolline; 3. Artemis; 4. Hecate; 5. The Morrigan.

Images used in this edition:

Cover image: Garden Bluebells by Ailim
Page 3: Ivy and quote from Audrey
Page 7: <http://2.bp.blogspot.com/planet-earth-from-space.jpg>